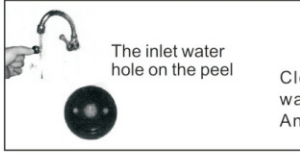
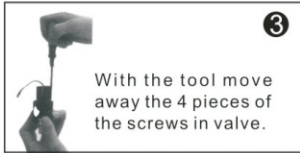
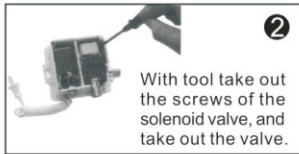
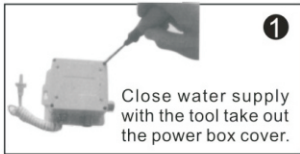
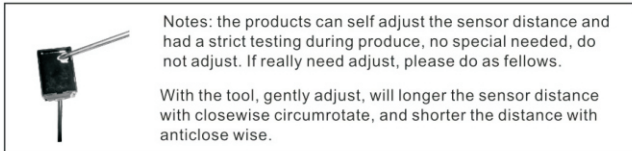


THE SOLENOID VALVE MAINTENANCE



Clean the peel clean the peel with water, make sure no dirty in the hole. And then fix the peel.

ADJUST THE SENSOR DISTANCE



Notes: the products can self adjust the sensor distance and had a strict testing during produce, no special needed, do not adjust. If really need adjust, please do as follows.

With the tool, gently adjust, will longer the sensor distance with clockwise circumrotate, and shorter the distance with anticlockwise.

NOTICE

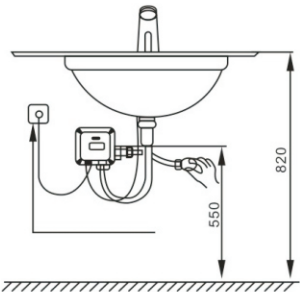
TO CLEAN INDUCTIVE WINDOW



In order to keep it clean, please clean lightly the induction window with soft dry clothes after installation.

Note: The cleanness of inductive window will influence the induction distance

TO ENSURE TO OPEN THE SWITCH BELOW

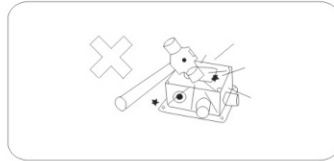


The machine will enter into the test condition after installing and ten seconds later, the switch can be opened and work normally.

Note: 1. When the machine is in the condition of self-examination, it belongs to the normal phenomenon that the sound of the electromagnetic valve will appear probably.

- If the inductive distance is very short, please move the barrier away and machine will recover a normal 5 or 6 minutes later.
- If the induction distance shifts from farness to nearness and the water is always flowing, the best distance will automatically be set 5 minutes later.

MAINTENANCE



When for cleaning the products, please do not use the acid or alkaline cleaner, and should not shower water to products, no knock.

ELIMINATION OF SIMPLE TROUBLE

Phenomenon	Possible reason	The way to solve
No water flows	No power	Replase of new battery
	The sensor distance is in self - adjument from long to short after the faucet installation.	Wait for 5 mins
	Dirty in the induction window	Clean it
	No water supplied	Wait for water supplied
	Dirty of the filter	Clean filter
	Not in suitable water pression	Provide suitable water pressure
Could not close water	The last time working is as long as 90 seconds	Leave away for 2 seconds, then let it work.
	No battery power	Fix new battery
	Not in suitable water pressure	Provide the suitable water pressure
	Dirty in the solenoid valve (take out filter)	Make the water into the outlet water pipe to clean the solenoid valve
After close water still drop water	Dirty in induction window	Clean it
	Barrier in induction window	Move away the barrier
	Water pressure is too low	Provide suitable water pressure
	Dirty in solenoid valve (take out filter)	Make the water into the outlet water pipe to clean the solenoid valve
Too little water flows	Dirty in the filter	Clean filter
	Dirty in solenoid valve	Make the water into the outlet water pipe to clean the solenoid valve
	Too small of inlet water pipe	Provide standard supplied water pipe
	Dirty in filter	Clean filter
The battery is in short life	Too low water pressure	Provide suitable water pressure
	Use non- alkaline bad battery	Use AA alkaline battery
No one makes sensor, but it flows water	Too strong of the light	adjust the light
	Too long of the sensor distance (it effects by the environment)	adjust the sensor distande



AUTOMATIC FAUCET SPECIFICATION MANUAL

FUNCTION AND CHARACTER

- Automatic function:**
When your hands approach the inductive parts, the water will come out and when your hands leave, it will stop automatically.
- Cleanness and Sanitation:**
The water will come out and stop automatically without touching the metal parts and it is convenient and hygienic. In case of germ' crossed infection, it must be disinfected effectively and flushed once automatically after an interval of 24 hours if necessary .
- Function of saving water:**
Because of your busyness , automatic function can prevent you from wasting water, and there is overtime induction or the automatic f unction of the induction because of its continuous misleading by eyewinkers , and the effect of saving water is obvious.
- Faucet filter:** The setup of filter can prevent the sand and solid materials in the water from outflow.
- Installation of simple dry battery:** Troublesome work of electric wiring can be omitted and you will feel much safer.
- The inductive distance adjusted automatically(optional)**
The inductive distance can be adjusted automatically according to the lavatory and environment.
- Elegant appearance:** Streamline design on product exterior caters to modem trends.
- Self-adjust the inductive range** according to the size of washbasin and application condition. Regular adjusting inductive range malfunction caused by changes of appllcation condition can be avoided.
- Flushing electromagnetic valve and water-softened devica** are installed inside. It is easy to use with the feature of even and smooth draining

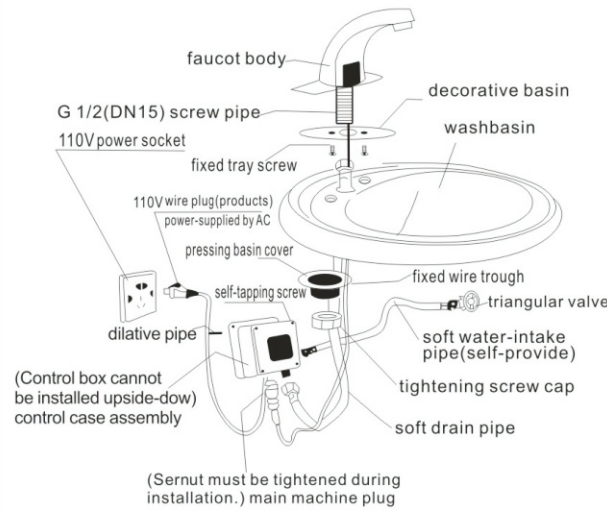
MODEL AND SPECIFICATION

MODEL	AUTOMATIC FAUCET	REMARKS
Power	DC6V(AC110V)	DC、AC、AC/DC
Consumption	≤0.5mw	With 4 pieces of AA alkaline battery, it can work for 2 years based 300 sensor times/day.
Sensor distance	15-30cm after checking in factory according to standard inductive board	Can self-adjust after installation, around 10-15cm
Suitable water pressure	0.1-0.6MPa	
The temperature of environment	0.1-45°C	
pipe diameter	G1/2" (DN 15)	

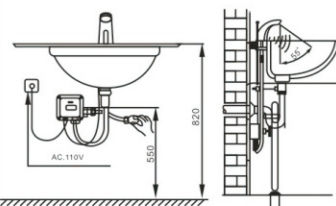
- Notes: after installation the sensor faucet, and water flows continually, please fix the battery or AC power, make the faucet sense, water will automatically shut off. Separate water valve cannot be opened until both pressure-resistant testing and water leakage examination against water pipe are completed.

INSTALLATION DIAGRAM

- Notes: This configuration is applicable for aperture above 28-35mm



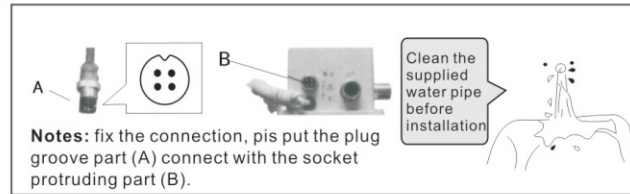
position choice



2

Notes:

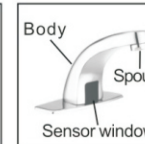
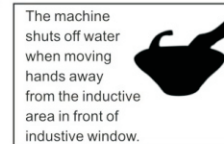
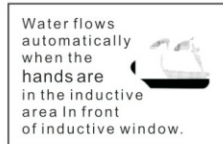
- Do not fix the faucet in the strong sunlight or blazing light.
- Supply and waterway switch being turned off.
- Control box cannot be installed upside-down.
- Between pipeline and water way does not leak.
- 110V wire plug must be inserted into 110V power socket to switch on the wire after the installation of AC products.



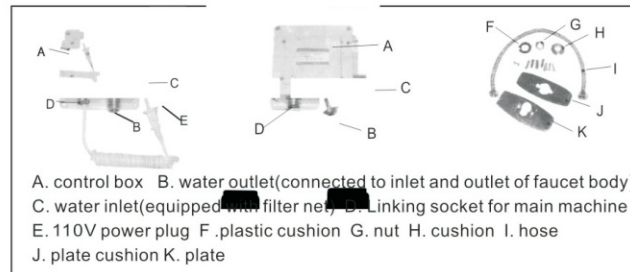
OPERATION INSTRUCTIONS

Notes before installation

- Pipeline should be washed before installation. Otherwise, the abnormal operation of machine may be caused by sand inflow into electromagnetism from pipeline.
- Please don't inlay any reflective objects such as stainless steel etc. on the wall opposite inductive window to avoid affecting the normal operation of machine.
- The inductor cannot be installed in places of direct irradiation of sunlight or blazing lighting in order to maintain the unflinching performance.
- Please don't use un-disposed polluted water or water containing much impurity for this kind of faucet.
- Please drains automatically from the machine when reaching hands into the inductive area in front of inductive window.



- The machine will shut off water when washing time exceeds 1.5 minutes or foreign matter induces continuously in inductive area. If follow-up washing is needed, re-induce after removing hands for 2 seconds.



- This machine can automatically adjust inductive range within 10 seconds of electrification. Don't use inductor during this period in order for inductor to automatically adjust to suitable inductive range.

TO CLEAN THE FILTER

These is may dirty in filter if the following occurs, the filter needs to be clean.

- Too little water flows
- In the first month of use
- After working for half year of the machine.



Close the supplied water, unscrew the inlet water pipe.



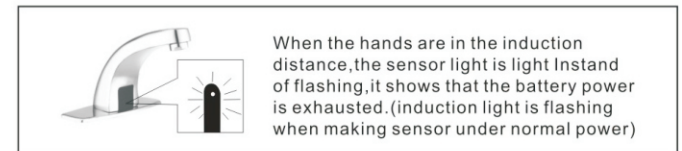
With tool, take out the filter in the inlet water pipe.



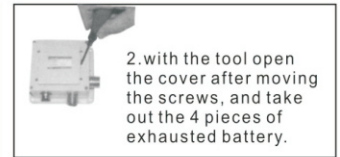
Clean the filter with water, then fix.

3

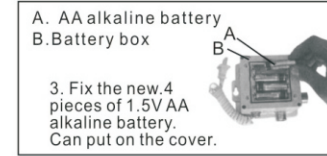
REPLACEMENT OF BATTERY



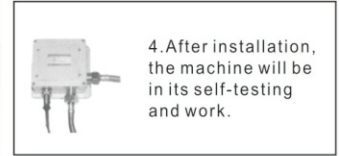
1. With the tool take out the screws.



2. With the tool open the cover after moving the screws, and take out the 4 pieces of exhausted battery.



A. AA alkaline battery
B. Battery box
3. Fix the new 4 pieces of 1.5V AA alkaline battery. Can put on the cover.



4. After installation, the machine will be in its self-testing and work.

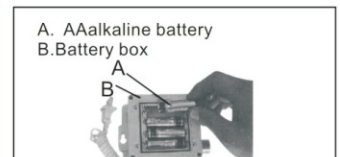
Notes:

- Please use the AA type alkaline battery (1.5v for each).
- Fix the battery correctly. Should not be mix use the batteries with different brand, the new and old, and if use non-alkaline battery, the battery life is short in 1-2 months.
- After installation of the battery, the solenoid valve will in its self-testing.
- After provide the power, in 10s, the machine will self adjust the sensor distance, so during this period, do not make it work.
- If the sensor distance is short, please move away the barrier for 5-6 mins, the machine will adjust to normal.
- If sensor distance from far to near, and water flows continually, the machine will self-adjust the distance after 5 mins.

POWER SUPPLY INSPECTION



Take out the power box screws and the cover, check the batteries are correct fixing or not.



Take out the battery, checking it whether any rust on the spring.

Notes: if the machine is not made use of it for long time, please take out the battery, in case of that the battery electrolyte will corrupt the power box.

Power supply inspection of using AC power



Check whether the plug is connected correctly without loosening and whether the power supply is AC 110V. Warning: The inspection of alternating current must be made by professionals instead of non-professionals and children to avoid the occurrence of electric shock accident.

Notes: when using AC products, check regularly if wire and plug are featured with damage, ageing and break etc. to avoid accidents. This machine can automatically adjust inductive range within 5 minutes of electrification. Do not use inductor during this period in order for inductor to automatically adjust to suitable inductive range.

4